



## OUR NEW CARE LINE FOR ALL KINDS OF HUMAN HAIR

### ICONS:

We use two icons across the care series: **Human Hair** and **Scalp Care**. Each product is marked with the corresponding icon depending on its intended use.

With our wide range of care products, the icons help provide clarity and make it easier to identify the product's purpose at a glance.



### Who it's for:

This care series is primarily developed for wearers of **human hair wigs and hair systems**. It covers all essential aspects of **cleansing and care** required for our Aderans human hair products. Thanks to its simplicity and well-balanced formulation, the series can be confidently recommended and used with any human hair product.



# EXFOLIATING SHAMPOO

## ABOUT IT:

The cleansing treatment, with its fresh scent, rebalances the skin's microflora and soothes discomfort.

Its microbeads gently remove dead skin cells, while its cooling effect provides intense and long-lasting relief to the scalp.

## HOW TO USE:

Apply the recommended amount of shampoo to your hands (5-10 ml), emulsify and apply to the scalp, massage through the hair and scalp, rinse and repeat the process. This is a deep cleansing shampoo, used to remove built up sebum / glue after a unit has been removed. For external use only. Avoid contact with eyes. In case of contact with eyes, rinse immediately with water.

## INGREDIENTS:

AQUA (WATER), SODIUM LAURETH SULFATE, ACRYLATES COPOLYMER, COCAMIDOPROPYL BETAINE, BAMBUA ARUNDINACEA STEM EXTRACT, MENTHYL LACTATE, PARFUM (FRAGRANCE), CITRIC ACID, COCAMIDOPROPYL BETAINEAMIDE MEA CHLORIDE, AMINOMETHYL PROPANOL, GLYCERIN, XYLITOL, LACTITOL, LINALYL ACETATE, TETRAMETHYL ACETYLOCTAHYDRONAPHTHALENES, DISODIUM EDTA, GERANYL ACETATE, ANETHOLE, MAGNESIUM NITRATE, METHYLCHLOROISOTHIAZOLINONE, MAGNESIUM CHLORIDE, METHYLISOTHIAZOLINONE.



# HYDRATING SHAMPOO

## ABOUT IT:

Its cleansing base combines nourishing, smoothing, and repairing properties. Apply to wet hair, lather gently, and rinse thoroughly.

## HOW TO USE:

Gently brush through the hair, starting at the ends working towards the roots. Secure the wig onto a Styrofoam head. Rinse the wig with lukewarm water until fully soaked. Dispense the recommended amount of shampoo into your hand and apply it evenly along the hair in the natural direction. Avoid rubbing the hair. Leave the shampoo on for one minute, then rinse thoroughly with lukewarm water. For external use only. Avoid contact with eyes. In case of contact with eyes, rinse immediately with water.

## INGREDIENTS:

AQUA (WATER), SODIUM LAUROYL METHYL ISETHIONATE, COCAMIDOPROPYL BETAINE, DECYL GLUCOSIDE, SODIUM COCOAMPHOACETATE, PARFUM (FRAGRANCE), ACRYLATES/C10-30 ALKYL ACRYLATE CROSSPOLYMER, PEG-7 GLYCERYL COCOATE, POLYQUATERNIUM-22, BENZYL BENZOATE, SODIUM BENZOATE, AMINOMETHYL PROPANOL, PANTHENOL, POTASSIUM SORBATE, SODIUM PCA, SODIUM LACTATE, GLYCOL DISTEARATE, SODIUM GLUCONATE, POLYQUATERNIUM-11, ARGININE, COCO GLUCOSIDE, ASPARTIC ACID, PCA, SODIUM LANETH-40 MALEATE/STYRENE SULFONATE COPOLYMER, GLYCERIN, ALPHA-ISOMETHYL IONONE, GLYCERYL STEARATE, GLYCERYL OLEATE, ALCOHOL, GERANIOL, GLYCINE, ALANINE, PEG-40 HYDROGENATED CASTOR OIL, SERINE, VALINE, PHENOXYETHANOL, TOCOPHEROL, ISOLEUCINE, THREONINE, PROLINE, CITRIC ACID, CAPRYLYL GLYCOL, BENZOIC ACID, HISTIDINE, PHENYLALANINE, VITIS VINIFERA (GRAPE) SEED EXTRACT.



# REFRESHING PLATINUM SHAMPOO

## ABOUT IT:

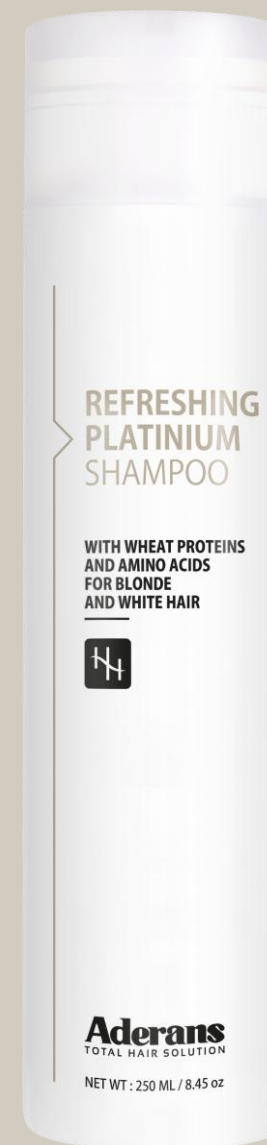
Thanks to its lightweight foam, the luminous cleansing treatment cleanses without weighing the hair down. Its violet pigments neutralize brassy tones. Wheat amino acids penetrate the hair fibre, deeply restoring it. Hair regains its beauty and shine.

## HOW TO USE:

Counteracts yellow pigments. Gently brush through the hair, starting at the ends working towards the roots. Secure the wig onto a Styrofoam head. Rinse the wig with lukewarm water until fully soaked. Apply the recommended amount of shampoo to your hand and distribute it along the lengths of the hair, following the natural direction. Avoid rubbing the hair. Leave on for one minute, then rinse thoroughly with lukewarm water. Be careful when applying as the shampoo may stain the base. For external use only. Avoid contact with eyes. In case of contact with eyes, rinse immediately with water.

## INGREDIENTS:

AQUA (WATER), DECYL GLUCOSIDE, COCAMIDOPROPYL BETAINE, COCAMIDOPROPYL HYDROXYSULTAINE, DIMETHICONE, BENZYL ALCOHOL\*, ACRYLATES/C10-30 ALKYL ACRYLATE CROSSPOLYMER, AMINOMETHYL PROPANOL, PARFUM (FRAGRANCE), POLYQUATERNIUM-10, POLYQUATERNIUM-11, LAURYL ALCOHOL, DICAPRYLYL ETHER, WHEAT AMINO ACIDS, PHENOXYETHANOL, POTASSIUM SORBATE, DISODIUM EDTA, MAGNESIUM NITRATE, CAPRYLYL GLYCOL, METHYLCHLOROISOTHIAZOLINONE, MAGNESIUM CHLORIDE, METHYLISOTHIAZOLINONE, TOCOPHEROL, CI 60730 / (EXT. VIOLET 2). \*Solvent



# MOISTRURISING CONDITIONER

## ABOUT IT:

The conditioning cream hydrates and makes detangling easier. After shampooing, apply a small amount (about the size of a walnut) evenly through the hair. Brush through, then leave on for 5 to 10 minutes. Rinse thoroughly with lukewarm water. Do not massage the hair with your fingers.

## HOW TO USE:

After shampooing, apply the recommended amount of conditioner to your hand and gently smooth it along the lengths of the hair. Avoid applying conditioner directly to the base of the wig where the knots are. Leave on for approximately 5-10 minutes, then rinse thoroughly with lukewarm water. For external use only. Avoid contact with eyes. In case of contact with eyes, rinse immediately with water.

## INGREDIENTS:

AQUA (WATER), CETEARYL ALCOHOL, CAPRYLIC/CAPRIC TRIGLYCERIDE, PHENOXYETHANOL, PARFUM (FRAGRANCE), BEHENTRIMONIUM METHOSULFATE, DIGLYCERIN, AMODIMETHICONE, TOCOPHERYL ACETATE, DISODIUM EDTA, ETHYLHEXYLGLYCERIN, SILK AMINO ACIDS, CETRIMONIUM CHLORIDE, TRIDECETH-12, TETRAMETHYL ACETYLOCTAHYDRONAPHTHALENES, TROMETHAMINE, SODIUM BENZOATE, LINALYL ACETATE, PINENE, HEXAMETHYLINDANOPYRAN.



# NOURISHING LEAVE IN CONDITIONER

## ABOUT IT:

Instantly detangles, revitalizes the hair fibre, makes styling easier, and adds softness. Lightly spray onto hair before styling. Leave to dry.

## HOW TO USE:

Spray onto damp or dry hair. Only lightly spritz the hair do not saturate. For external use only. Avoid contact with eyes. In case of contact with eyes, rinse immediately with water.

## INGREDIENTS:

AQUA (WATER), ISOHEXADECANE, AMODIMETHICONE, BENZYL ALCOHOL, DIMETHICONE, PHENYL TRIMETHICONE, PEG/PPG-18/18 DIMETHICONE, TRIDECETH-12, BUTYLENE GLYCOL, PARFUM (FRAGRANCE), CETRIMONIUM CHLORIDE\*, PROPYLENE GLYCOL, HELIANTHUS ANNUUS (SUNFLOWER) SEED OIL, DEHYDROACETIC ACID, HELIANTHUS ANNUUS (SUNFLOWER) SEED EXTRACT, CITRIC ACID, SODIUM GLUCONATE, LINALOOL, CHENOPODIUM QUINOA SEED EXTRACT, TERPINEOL, ALCOHOL, AMBER EXTRACT, POLYAMINOPROPYL BIGUANIDE, SODIUM BENZOATE, POTASSIUM SORBATE, TOCOPHEROL, ROSMARINUS OFFICINALIS (ROSEMARY) LEAF EXTRACT, CI 17200 / (RED 33). \*Antistatic



## GLOSS & FINISH SERUM

### ABOUT IT:

The gloss finish serum, with its subtle vanilla scent, is a shine-boosting concentrate that instantly illuminates the hair with softness and lightness. Its formula, enriched with babassu oil and silk protein, nourishes and strengthens the hair fibre, delivering exceptional softness and incomparable shine.

### HOW TO USE:

Apply to damp or dry hair by smoothing the serum through the mid lengths and ends. Use sparingly. Do not rinse. For external use only. Avoid contact with eyes. In case of contact with eyes, rinse immediately with water.

### INGREDIENTS:

DIMETHICONE, C13-15 ALKANE, DIMETHICONOL, ISOPROPYL PALMITATE, PARFUM (FRAGRANCE), ORBIGNYA OLEIFERA SEED OIL, HEXAMETHYLINDANOPYRAN, ALCOHOL, TERPINEOL, LINALYL ACETATE, ACETYL CEDRENE, ETHYL ESTER OF HYDROLYZED SILK, GERANYL ACETATE, DENATONIUM BENZOATE.

